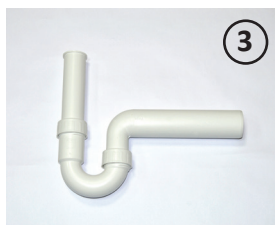
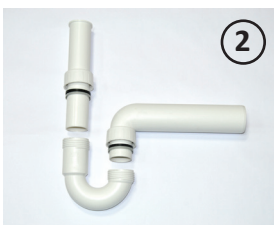
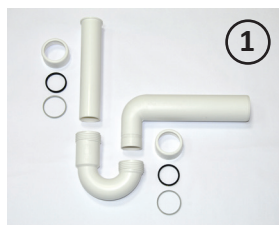
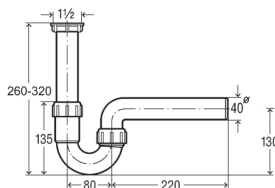


# Siphon for softeners

A siphon set with air gap at the wastewater draining off from the softener

## Assembly of the siphon

The siphon set comprises 9 elements (**fig. 1**): the siphon, an elbow, pipe, 2 nuts, 2 seals and 2 washers. Place the nuts onto the pipe and then place the washers and nuts as showed on **fig. 2**. Connect one end of the siphon with the pipe and the second with the elbow and tighten the nuts. The assembled siphon should look like on **fig. 3**.



## Assembly of the air gap with the siphon

The air gap comprises 2 elements (**fig. 4**): the valve (white) and adapter to the drain hose (grey element). Insert the adapter into the valve with the smooth side of the adapter (**fig. 5**). Put the bottom part of the valve into the siphon pipe (**fig. 6**). Use glue for plastic material. Check for any leaks. Connect the adapter with the drain hose. Check again for any leaks.

